

# **PIANC APAC 2024 CONFERENCE** **CONNECTING ASIA-PACIFIC PORTS IN A CHANGING WORLD**

Philip Holliday, CEO and Director  
Port Authority of NSW

28 August 2024



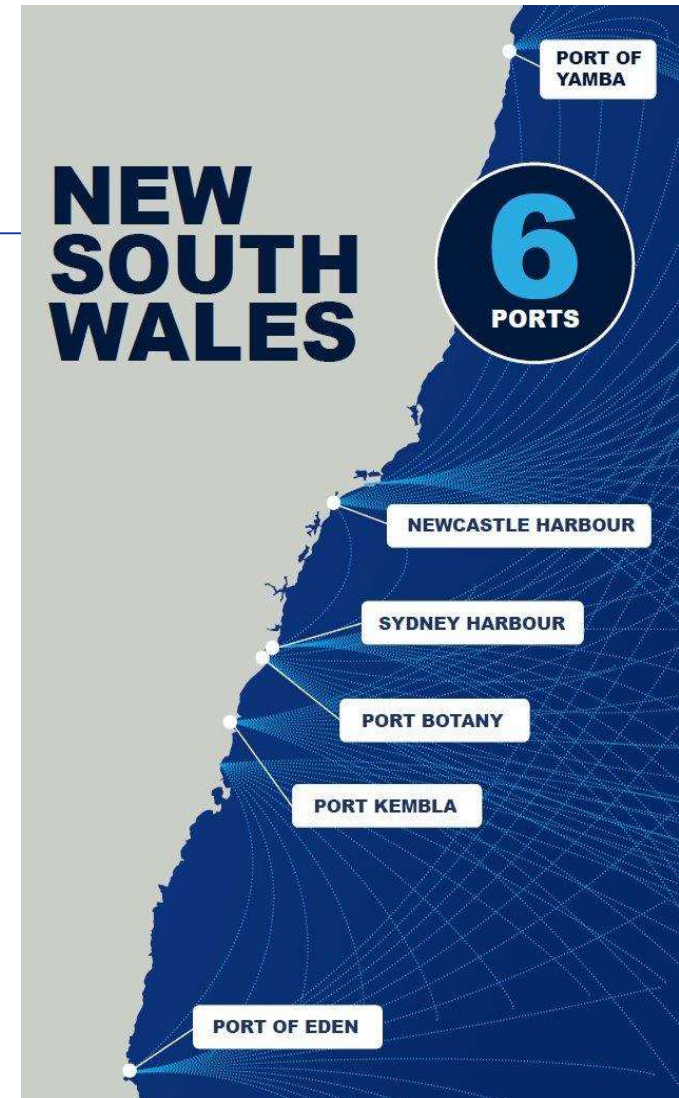
## Port Authority overview

Responsible for all commercial marine functions in the ports of Sydney Harbour, Port Botany, Newcastle Harbour, Port Kembla, Port of Eden and Port of Yamba.

Including the statutory Harbour Master's function, the provision of pilotage and navigation services, and port safety functions as prescribed in the Port Safety Operating License (PSOL).

Port safety functions include:

- Provision and maintenance of aids to navigation.
- Marine pollution emergency response and investigation and administration of the Marine Pollution Act.
- Administration of the legislation concerning the handling, transportation and storage of dangerous goods within the ports' jurisdiction.
- Administration of marine safety licenses and towage licenses.
- Provision of port communications systems and vessel arrival system for the Port of Newcastle.





# What we do

Our primary role is to ensure safe navigation and berthing for commercial vessels in the ports of NSW.



Cruise terminals



Hydrographic survey



Port security



Dangerous goods



Marine assets



Emergency response



Vessel traffic services



Safe navigation



Marine pilotage



Cruise development



Port management



Harbour master directions

## Critical drivers of change

---



Navigating turbulent  
waters



Sustainability must  
become a BAU



Prioritising our people

# NAVIGATING TURBULENT WATERS





## Glebe Island – 1946



AUSTRALIAN WAR MEMORIAL



## Bays Port today





# Learning from other ports

*Port of Quebec*



*Port of Barcelona*



*Port of New York and New Jersey*





# Sydney Harbour's port lands

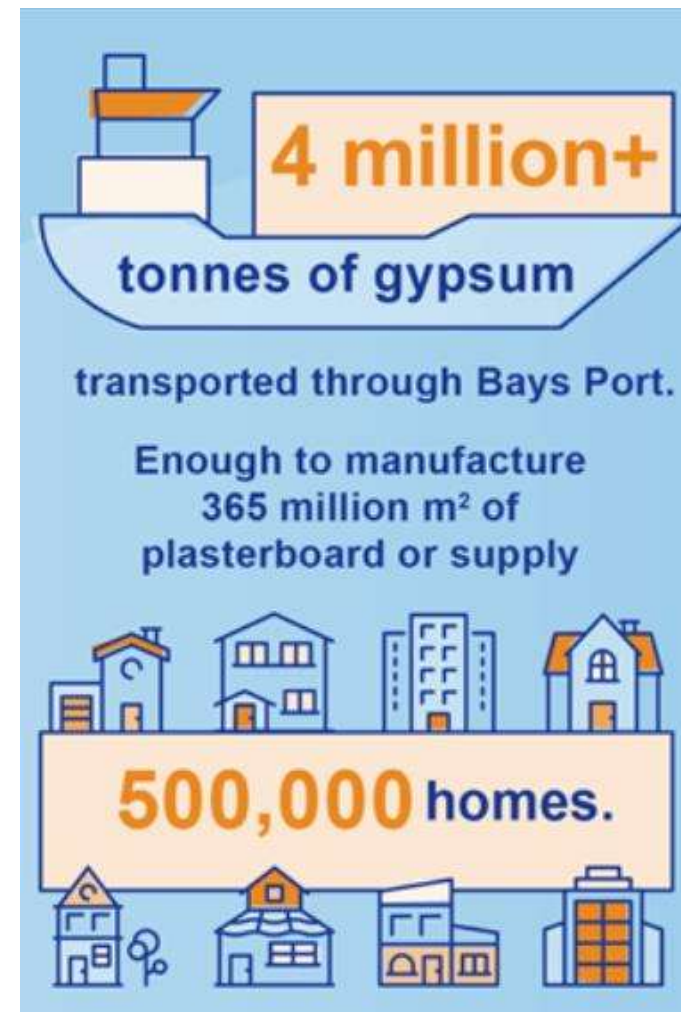
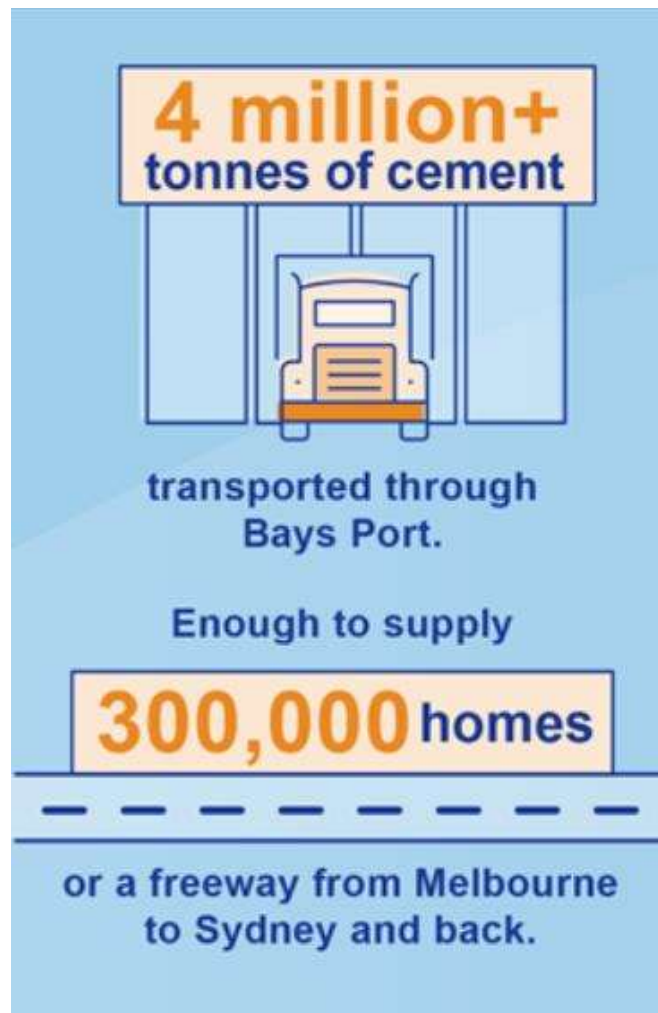
Former extent of Sydney Harbour port and working waterfront since 1907



Current Port and working waterfront

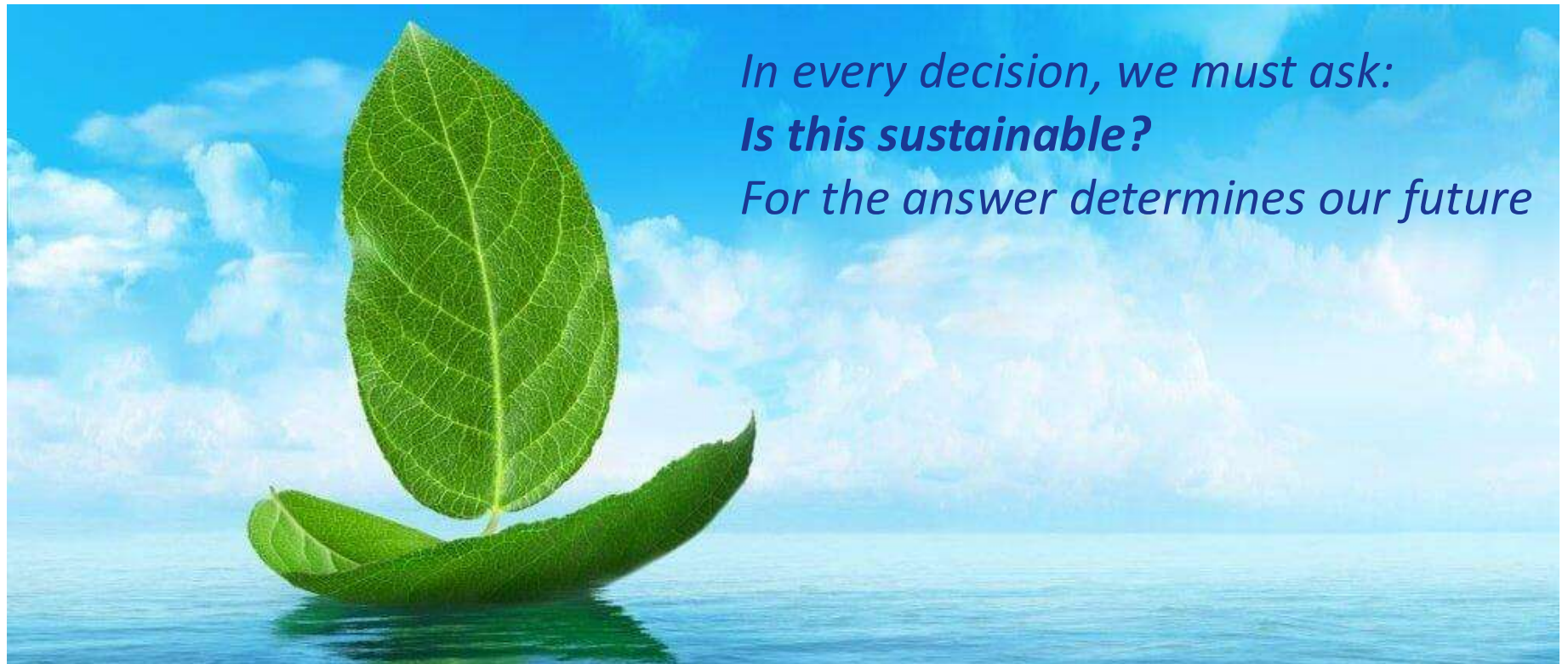


# Imports through **Bays Port** over the past 10 years





## SUSTAINABILITY MUST BECOME BAU



*In every decision, we must ask:  
**Is this sustainable?**  
For the answer determines our future*

# Port Authority Sustainability Plan



Communities and partnerships



Environment and places



Operations and ways of working



Our people

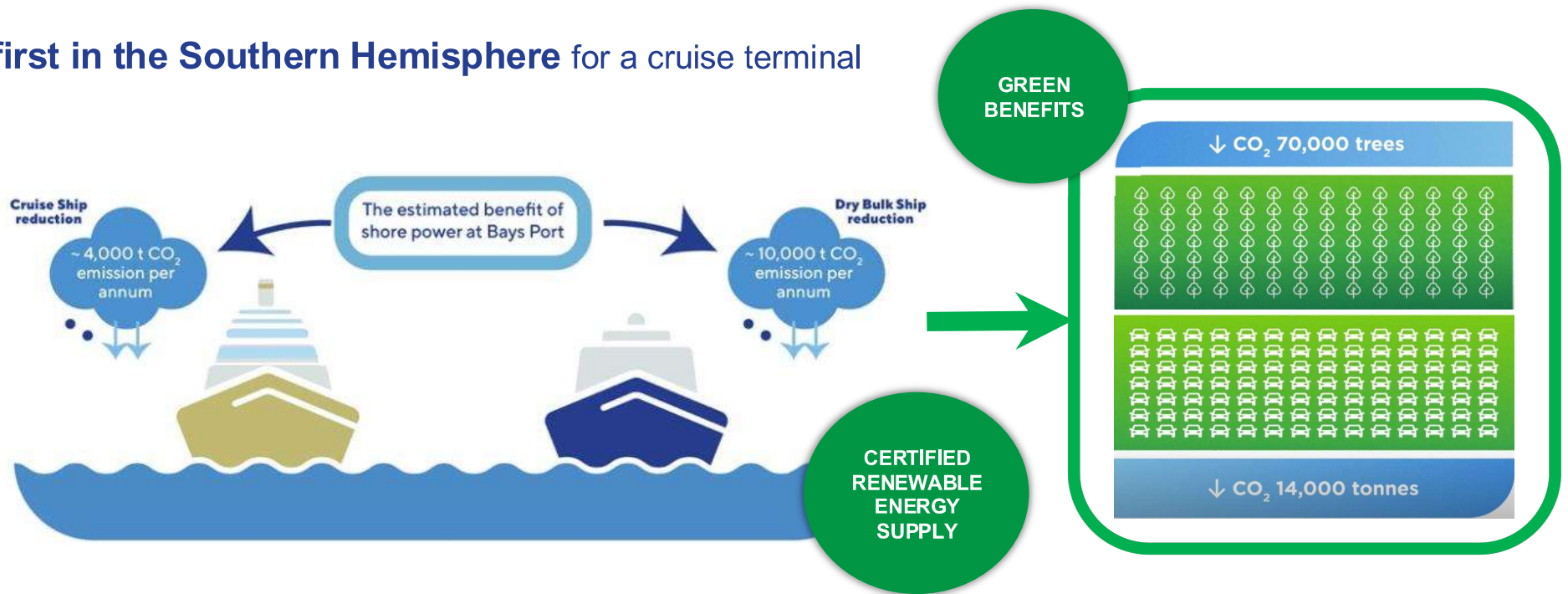




# Shore Power – leading sustainable port operation

A **world first** for a dry-bulk precinct

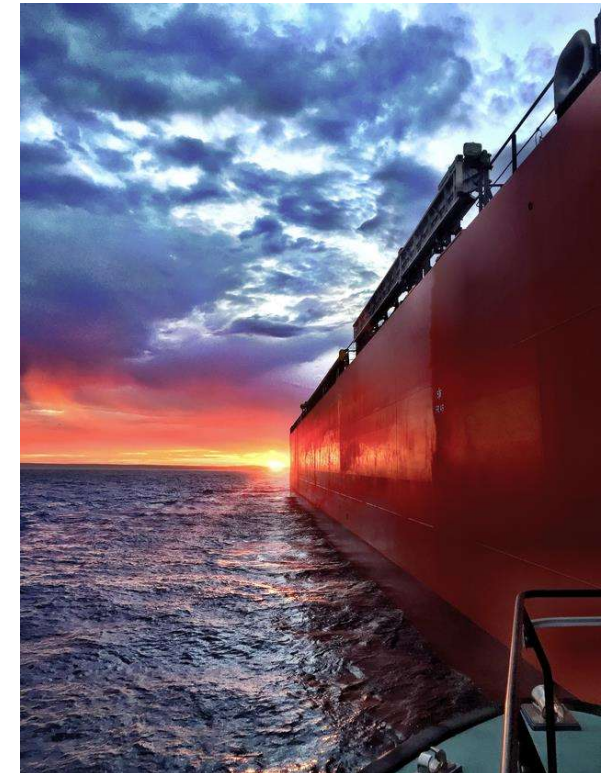
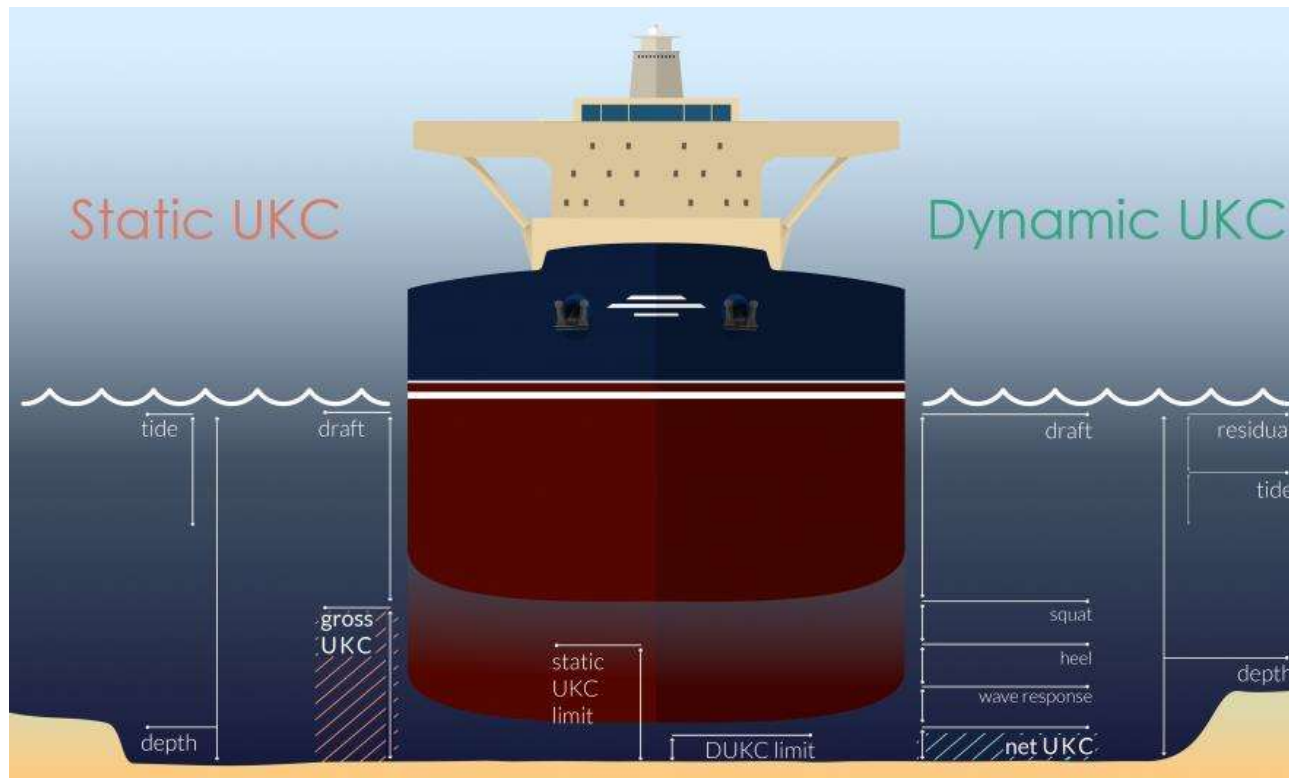
A **first in the Southern Hemisphere** for a cruise terminal







## Navigating bigger ships safely into port – DUKC

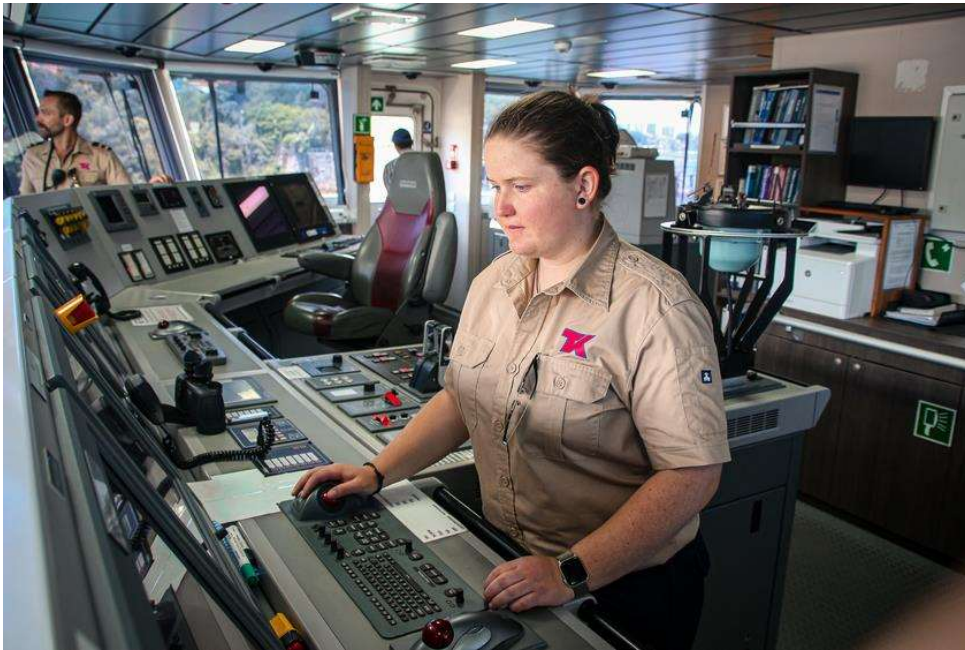


## OUR PEOPLE ARE OUR FUTURE





# Deck Cadet Program



## Safety first – Pilot ladders





SAFE +  
EFFICIENT  
Port Operations Forum







**Thank you**

**Visit: [portauthoritynsw.com.au](http://portauthoritynsw.com.au) to find out more**

